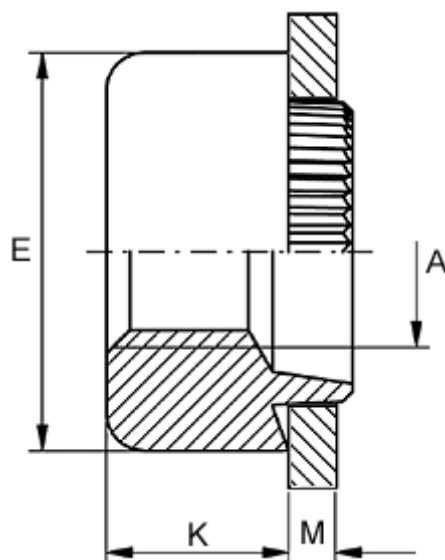


Article number: 12705000050110

Description: KLEE-coil 705 000 050.110
M5 Unhardened, zinc-pl. & chr. blue

Measures



Female thread A	= M5
Height K	= 3.0
Outer diameter E	= 11.0
Plate thickness	= 1.1 to 1.3
Recommended bore diameter for extreme load	= 8.0
Recommended bore diameter for normal use	= 8.0